

QUALITY ASSURANCE

质量保证

SYSTEM CERTIFICATION

IATF 16949	ISO 17025
ISO 9001	ISO 45001
IECQ QC 080000	IEC 27001
ISO 14001	ESD (ANSI S20.20)



Certified by international benchmark enterprises and third-party SGS social responsibility audits, meeting EICC (Electronic Industry Citizenship Coalition) standards.

Quality System
质量体系



Third-party testing complies with ROHS, REACH, HF, IEC/EN 62471, LM-80, and other international standards.



REFOND

深圳市瑞豐光電子股份有限公司
SHENZHEN REFOND OPTOELECTRONICS CO.,LTD.

股票代码: 300241

广东省深圳市光明区融汇路瑞丰光电大厦
TEL:+86-0755-29675000/+86-0755-29060066
FAX:+86-755-6683-9322 sales@refond.com
www.refond.com

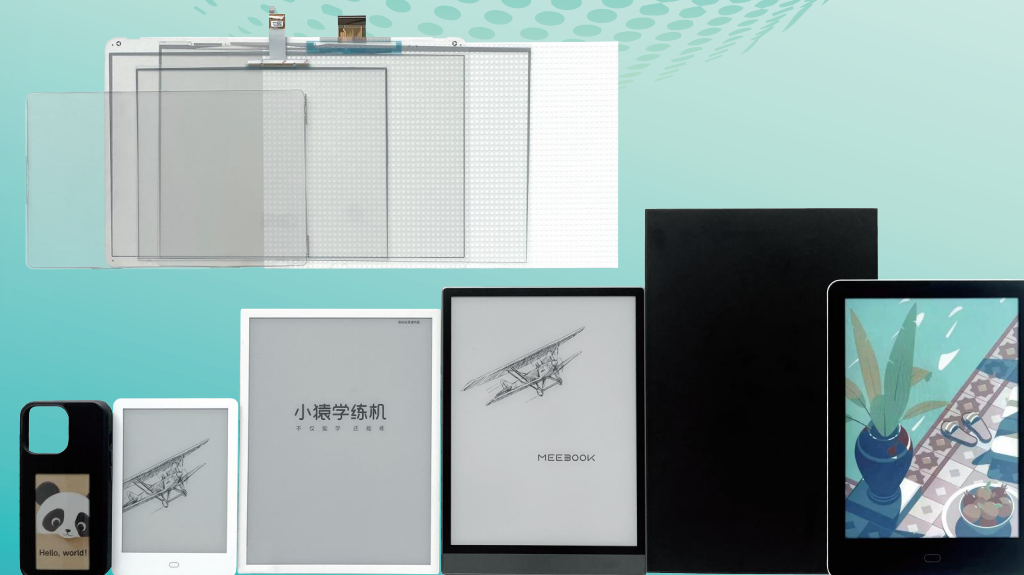
创新科技. 丰富人类生活!
Innovation enriches life



创新科技. 丰富人类生活!
Innovation enriches life

REFOND OPTOELECTRONICS Touch Display Modules

Application: Smart Signage | E-Readers | Educational Tablets | Drawing Tablets
| All-in-One Display MNT | Color Change Film Modules | MINI-LCM Modules



Green Touch Display Solutions

Front Light Guide Components + Touch Modules + Full Lamination Modules + Complete Solutions

Proprietary LED and Light Bar, ultra-thin high-light transmission light guide plate pattern design patents
Automated manufacturing technical solutions, full lamination process manufacturing capabilities, electromagnetic capacitive touch writing solutions
Independent intellectual property rights and mature processes for medium and large-sized MINI-LED core technology, high-quality touch display integrated modules

Shenzhen Refond Optoelectronics Co., Ltd. (Stock Code: 300241), established in 2000, is a globally renowned innovative technology company engaged in the research, development, production, and sales of LEDs, modules, and application solutions.

Technological innovation, leading-edge technology, and product differentiation are the core competencies that ensure Refond's success. The company has steadily expanded and promoted development in professional fields such as lighting, display, automotive, electronics, and touch display, establishing deep strategic partnerships with global top-tier brands. Refond focuses on research and business development in emerging fields such as automotive lighting and displays, Mini LEDs, and touch display electronic paper to enhance its core competitiveness and sustainable profitability.

Refond operates three production bases in Shenzhen, Guangdong; Gedian, Hubei; and Yiwu, Zhejiang, with an area of approximately 294,000 square meters. The company boasts mature manufacturing processes and comprehensive automated production lines, with over 6000 advanced pieces of equipment, including cutting-edge automated quality inspection devices. With an annual production yield rate exceeding 99%, the high level of automation and information-driven hardware and software systems ensure Refond's strong manufacturing capabilities and product quality.

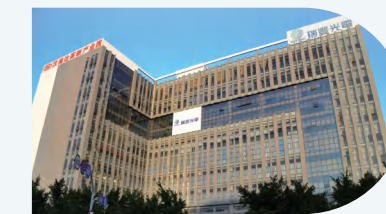
The touch display product line specializes in the research, development, manufacturing, and sales of electronic paper display modules, fully laminated touch modules, Mini LCM assembly and lamination, and complete electronic paper solutions. It offers a range of multifunctional static display products and services, from low power consumption and eye protection to black-and-white and full-color displays.

ABOUT REFOND

关于瑞丰



Shenzhen Headquarters



Shenzhen Production Base
Area: 34,000 square meters
Employees: 300+
Production: Automotive LEDs/Large and Small Backlight/MiniLED



Zhejiang Production Base
Area: 160,000 square meters
Employees: 1300+
Production: Lighting/Electrical/RGB /Optocoupler/Specialty LEDs



Hubei Production Base
Area: 100,000 square meters
Employees: 500+
Production: Automotive LEDs/MiniLED /Backlight/Touch Display/Electronic Paper Modules

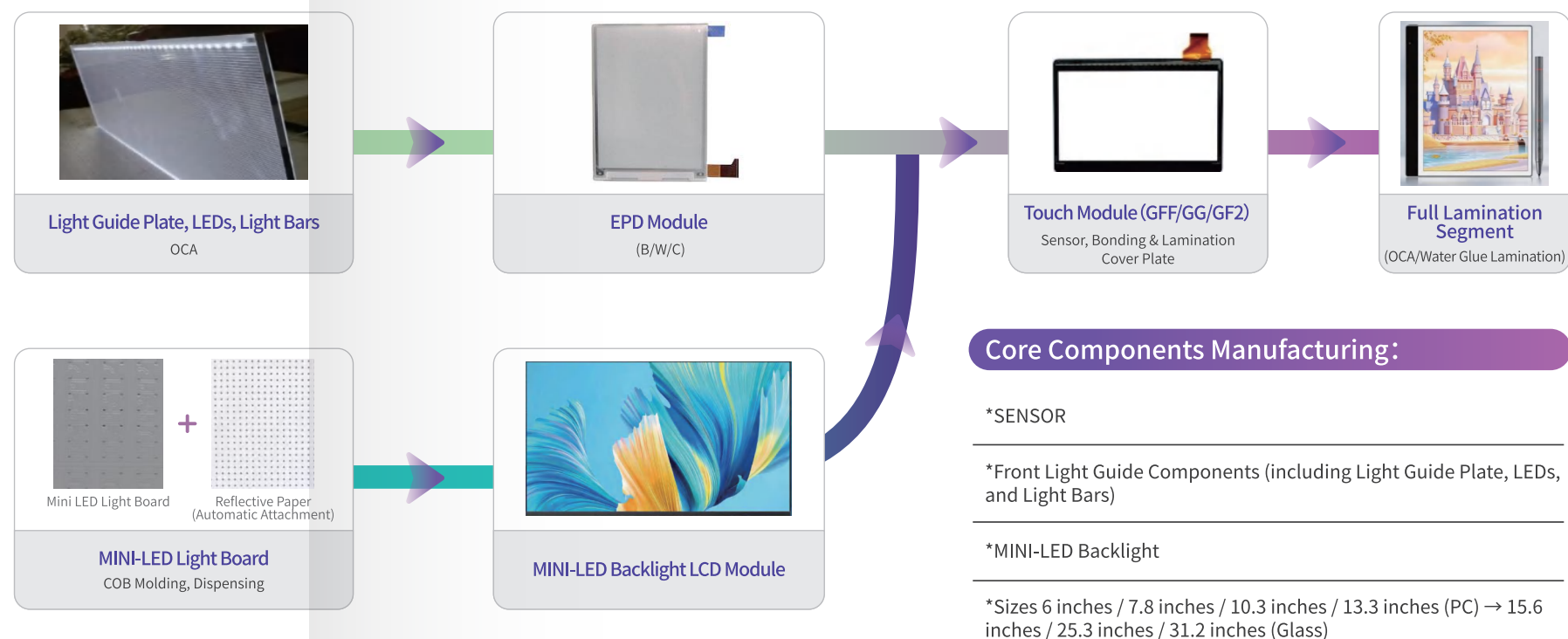
GREEN TOUCH DISPLAY SOLUTIONS

绿色触显整体解决方案

Front Light Guide Components(LEDs - Lightbar - Front Light Guide) + Touch Modules(GFF-GF2-GG) + Full Lamination Modules;

MINI Display Series: Design and manufacturing of MINI COB light boards, MINI LCM backlight display modules, and small-pitch MINI direct display product solutions

E-paper Application Series: Minimization of high color gamut, high luminous efficiency, and high color rendering index cold and warm LEDs, flexible side-entry light bars, front light guide plates, GFF/GF2 touch full lamination modules, providing customers with low power consumption, eye-protection integrated module product solutions



Core Components Manufacturing:

*SENSOR

*Front Light Guide Components (including Light Guide Plate, LEDs, and Light Bars)

*MINI-LED Backlight

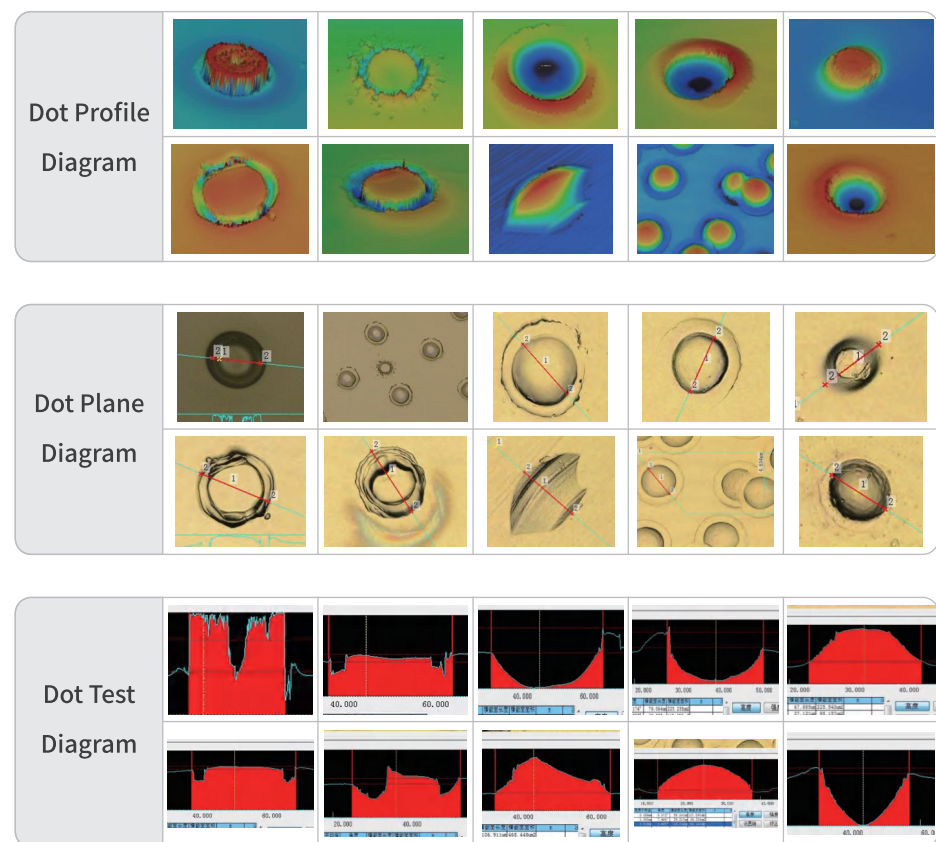
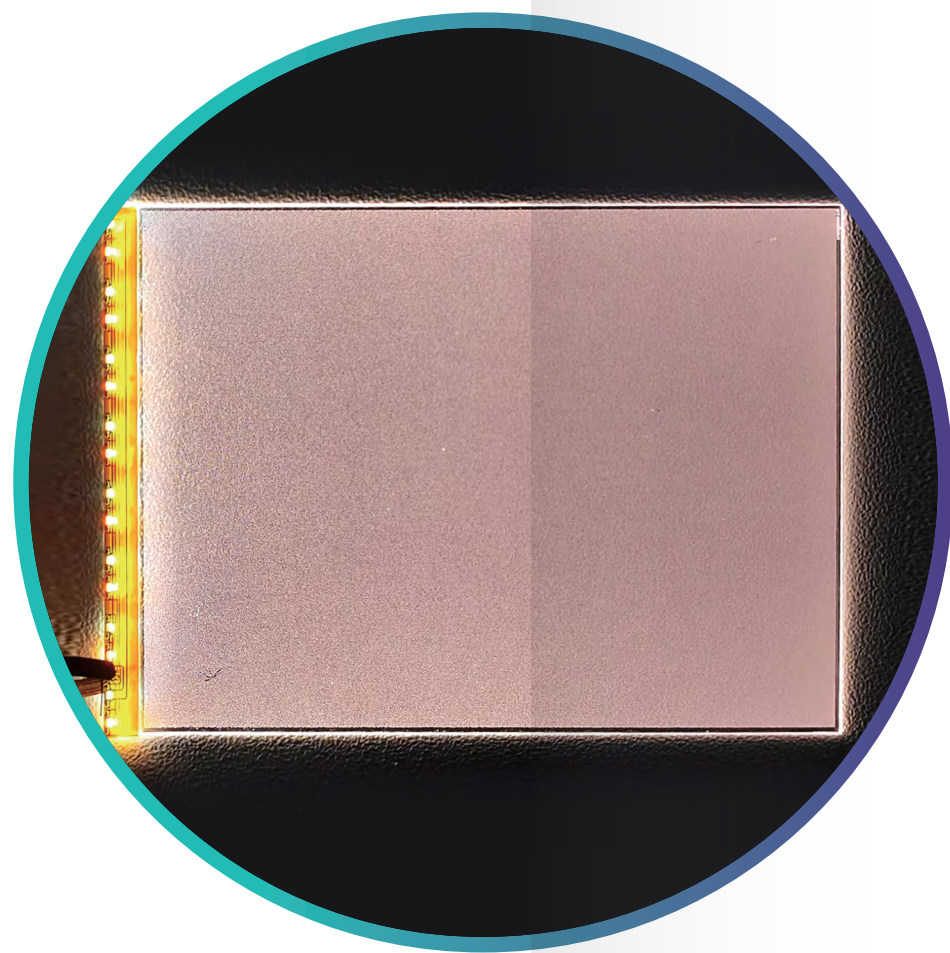
*Sizes 6 inches / 7.8 inches / 10.3 inches / 13.3 inches (PC) → 15.6 inches / 25.3 inches / 31.2 inches (Glass)

FRONT LIGHT GUIDE COMPONENTS - LIGHT GUIDE PLATE

前导光组件——导光板

Product Features:

- Offers ultra-thin light guide plates in thicknesses of 0.4mm, 0.25mm, and 0.15mm
- Available in both black and white, as well as colored light guide plates
- Various dot pattern light guide plate development technologies to meet different display effect requirements
- The patented design of ultra-thin, high-transparency light guide plates with patterns for both PC and glass substrates

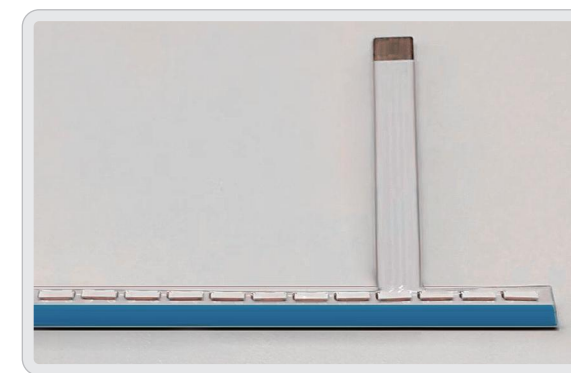


FRONT LIGHT GUIDE COMPONENTS - LEDS AND LIGHT BARS

前导光组件——灯珠、灯条

Product Features:

- Independently designed and developed LEDs of various specifications to match different thicknesses of light guide plates
- Complete LED and light bar design and development solutions
- Low blue light LEDs to protect the eyes
- Can achieve strict linear process control for light bars, ensuring uniform light efficiency
- Design of cold and warm light, wide color gamut LEDs to meet various lighting effect requirements

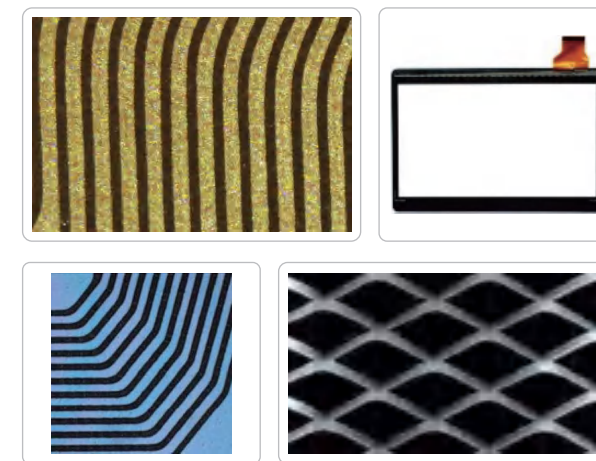


SENSOR COMPONENTS

SENSOR组件

Product Features:

- Processing capabilities for F-sensor, G-sensor, and Metalmesh SENSOR components
- Fully automatic bonding machines and semi-automatic machines for double-sided simultaneous bonding
- Design and processing capabilities for ultra-thin and ultra-narrow bezels
- Mature design and development solutions for active pens and electromagnetic pens
- Development solutions for combined electromagnetic and capacitive touch
- Provides products for various application environments such as consumer electronics, industrial control, medical, and automotive

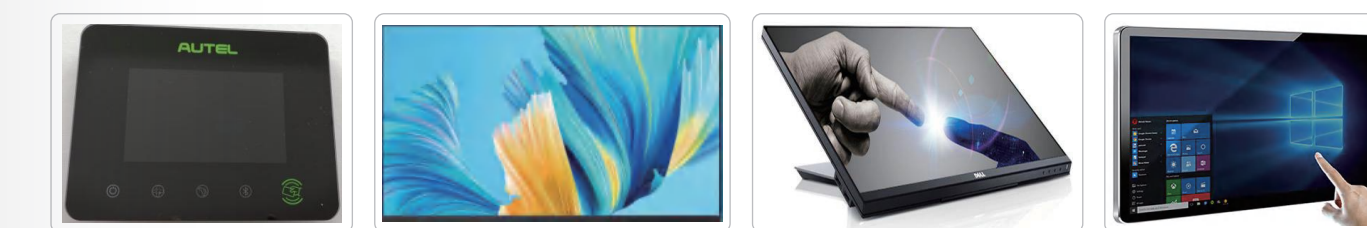
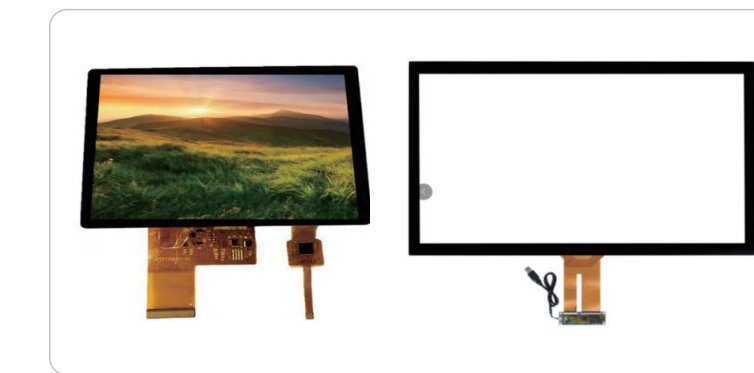


TOUCHSCREEN LAMINATION CAPABILITIES

触控贴合能力

Product Features:

- Equipped with fully automated soft-to-hard and hard-to-hard lamination equipment
- Capable of laminating a wide range of sizes from 1" to 65"
- Can achieve full lamination for GFF/GF2 and e-paper modules
- Capable of full lamination of G-sensor and LCD modules
- Can achieve full lamination of front light guides



MINI-LED Backlight Panel & Touch Display Full Lamination Modules

Extending Downstream Processes to Provide Integrated Touch Display Solutions to Customers!

